



WORLD-CLASS HEALTH CARE AT CHELSEA VILLAGE, AAIA ZONE

INVALUABLE PEACE OF MIND

Chelsea Village in Mogadishu is proud to have a NATO Role 2+ or UN Level 2 standard medical facility run by Medical Support Solutions (MSS) onsite. This means that visitors and private members are in the hands of experienced medical experts that have a long history of working in the most challenging of environments on the African continent. Fortunately, Chelsea Village Residents are eligible for discounted medical treatment and membership with MSS.

ROLE 1 SERVICES

PRIMARY HEALTH CARE

Consultations for day-to-day medical problems are provided on a walk-in or by appointment basis.

CLINICAL LABORATORY

Provides investigations relevant to acute care patients including: basic biochemistry; urinalysis; haematology; screening for tropical diseases endemic to the area and support for ICU and surgical cases.

INTENSIVE CARE UNIT (ICU)

A two-bed unit that provides care up to the point of medical evacuation.

DIAGNOSTIC IMAGING

Digital x-ray and ultrasound imaging.

MEDICAL EVACUATION

A facilitation of the entire evacuation process is provided including: liaison with the receiving facility; the provision of patient medical files to accompany patient; handover with Medevac staff at the MTF; monitoring of flight and patient follow-up.

*Please note that medical evacuation fees are a separate cost, that are not included in monthly memberships.

EMERGENCY BLOOD SUPPLY

A blood bank onsite provides emergency blood and freeze-dried plasma from certified blood banks in Europe and the USA. A walking blood bank can be established if needed.

DENTISTRY

Emergency, non-cosmetic dentistry, digital dental radiology, oral hygiene and polish is just a few of the dental

services offered by MSS. 24hr onsite dentist available, 7 days a week.

EMERGENCY CARE, MEDICAL AND TRAUMA RESUSCITATION

An emergency room of two bays is equipped to provide triage and resuscitation of patients received at the MTF.

PHARMACY

MSS maintains a supply of pharmaceuticals congruent with primary, emergency, ICU and surgical care. Chronic medication is not included in the monthly fee, but can be facilitated on an ad hoc basis.

ROAD AMBULANCE / EMS

Advanced life support, soft-skin ambulance service provided within the AAIA zone equipped for 2 ICU level patients.





ROLE 2 SERVICES

EMERGENCY SURGICAL SERVICES

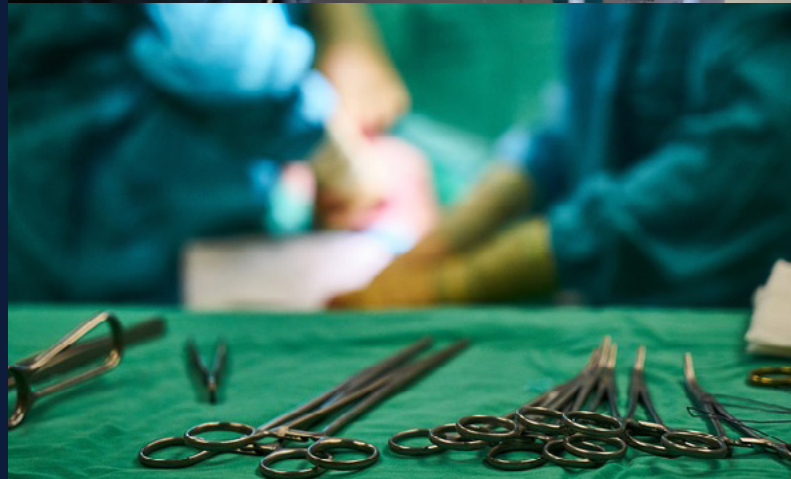
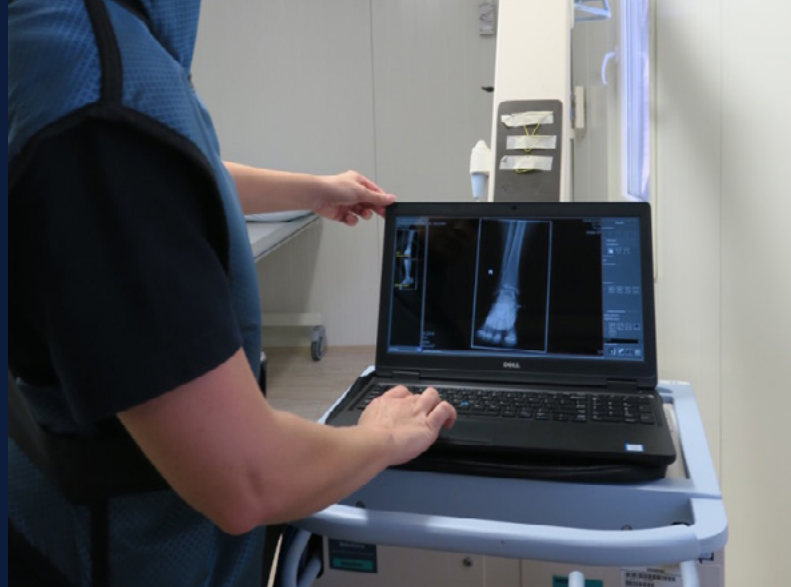
- Damage control surgery providing pre-operative, intra-operative and post-operative care.
- Staffed by an experienced surgical team.
- Focused on damage control surgery, however minor and elective procedures are possible.
- Positive pressure in the OR complex is maintained by a European standards, four stage air treatment system which includes HEPA filtration.

ADDITIONAL SERVICES

The following services are available at the facility and are charged for separately:

- Medical exams / screening (pre-employment occupational health tests)
- Drug and alcohol testing
- Vaccinations
- Medical Standby
- Medical and First Aid kits

Please note that the monthly fee includes all call-outs within the AAIA zone and services performed at the Chelsea Village facility. It is recommended that you have insurance to cover both medical evacuation and treatments outside of the Chelsea Village facility.



CONTACT

Diplomatic Medical Solutions, Chelsea Village,
Aden Adde International Airport (AAIA)

+252 616 969 698 | +252 683 014 145 | +44 23 8181 0700

Email: dms.mia.somalia@mssteam.net

Website: medsupportolutions.com

MEDICAL
support solutions

